



National Institute
on Drug Abuse

DrugFacts

www.drugabuse.gov

Marijuana

What is marijuana?

Marijuana refers to the dried leaves, flowers, stems, and seeds from the hemp plant, *Cannabis sativa*. The plant contains the mind-altering chemical *delta-9-tetrahydrocannabinol* (THC) and other related compounds.

Extracts with high amounts of THC can also be made from the cannabis plant (see "Marijuana Extracts" on page 2).



Marijuana is the most commonly used illicit drug in the United States (SAMHSA, 2014). Its use is widespread among young people. According to a yearly survey of middle and high school students, rates of marijuana use have steadied in the past few years after several years of increase. However, the number of young people who believe marijuana

use is risky is decreasing (Johnston, 2014).

Legalization of marijuana for medical use or adult recreational use in a growing number of states may affect these views. Read more about marijuana as medicine in *DrugFacts: Is Marijuana Medicine?* at www.drugabuse.gov/publications/drugfacts/marijuana-medicine.

How do people use marijuana?

People smoke marijuana in hand-rolled cigarettes (*joints*) or in pipes or water pipes (*bongs*). They



also smoke it in *blunts*—emptied cigars that have been partly or completely refilled with marijuana. To avoid inhaling smoke, more people are using vaporizers. These devices pull the active ingredients (including THC) from the marijuana and collect their vapor in a storage unit. A person then inhales the vapor, not the smoke.

Users can mix marijuana in food (*edibles*), such as brownies, cookies, or

candy, or brew it as a tea. A newly popular method of use is smoking or eating different forms of THC-rich resins (see "Marijuana Extracts").

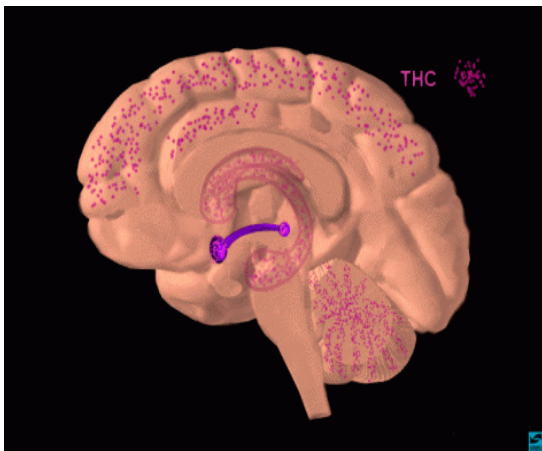
How does marijuana affect the brain?

Marijuana has both short-and long-term effects on the brain.

Short-term effects

When a person smokes marijuana, THC quickly passes from the lungs into the bloodstream. The blood carries the chemical to the brain and other organs throughout the body. The body absorbs THC more slowly when the person eats or drinks it. In that case, the user generally feels the effects after 30 minutes to 1 hour.

THC acts on specific brain cell receptors that ordinarily react to natural THC-like chemicals in the brain. These natural chemicals play a role in normal brain development and function.



THC (in magenta) acts on numerous areas in the brain.

Marijuana Extracts

Smoking THC-rich resins extracted from the marijuana plant is on the rise. Users call this practice *dabbing*. People are using various forms of these extracts, such as:

- *hash oil* or *honey oil*—a gooeey liquid
- *wax* or *budder*—a soft solid with a texture like lip balm
- *shatter*—a hard, amber-colored solid

These extracts can deliver extremely large amounts of THC to users, and their use has sent some people to the emergency room. Another danger is in preparing these extracts, which usually involves butane (lighter fluid). A number of people who have used butane to make extracts at home have caused fires and explosions and have been seriously burned.

Marijuana overactivates parts of the brain that contain the highest number of these receptors. This causes the "high" that users feel. Other effects include:

- altered senses (for example, seeing brighter colors)
- altered sense of time
- changes in mood
- impaired body movement
- difficulty with thinking and problem-solving
- impaired memory

Long-term effects

Marijuana also affects brain development. When marijuana users begin using as teenagers, the drug may reduce thinking, memory, and learning functions and affect how the brain builds connections between the areas necessary for these functions.

Marijuana's effects on these abilities may last a long time or even be permanent.

For example, a study showed that people who started smoking marijuana heavily in their teens and had an ongoing cannabis use disorder lost an average of eight IQ points between ages 13 and 38. The lost mental abilities did not fully return in those who quit marijuana as adults. Those who started smoking marijuana as adults did not show notable IQ declines (Meier, 2012).

What are the other health effects of marijuana?

Marijuana use may have a wide range of effects, both physical and mental.

Physical effects

- **Breathing problems.** Marijuana smoke irritates the lungs, and frequent marijuana smokers can have the same breathing problems that tobacco smokers have. These problems include daily cough and phlegm, more frequent lung illness, and a higher risk of lung infections. Researchers still do not know whether marijuana smokers have a higher risk for lung cancer.
- **Increased heart rate.** Marijuana raises heart rate for up to 3 hours after smoking. This effect may increase the chance of heart attack. Older people and those with heart problems may be at higher risk

A Rise in Marijuana's THC Levels

The amount of THC in marijuana has been increasing steadily over the past few decades. For a new user, this may mean exposure to higher THC levels with a greater chance of a harmful reaction. Higher THC levels may explain the rise in emergency room visits involving marijuana use.

The popularity of edibles also increases the chance of users having harmful reactions. Edibles take longer to digest and produce a high. Therefore, people may consume more to feel the effects faster, leading to dangerous results.

Dabbing is yet another growing trend. More people are using marijuana extracts that provide stronger doses, and therefore stronger effects, of THC (see "Marijuana Extracts" on page 2).

Higher THC levels may mean a greater risk for addiction if users are regularly exposing themselves to high doses.

- **Problems with child development during and after pregnancy.** Marijuana use during pregnancy is linked to increased risk of both brain and behavioral problems in babies. If a pregnant woman uses marijuana, the drug may affect certain developing parts of the fetus's brain. Resulting challenges for the child may include problems with attention, memory, and

problem-solving.

Mental effects

Long-term marijuana use has been linked to mental illness in some users, such as:

- temporary *hallucinations*—sensations and images that seem real though they are not
- temporary *paranoia*—extreme and unreasonable distrust of others
- worsening symptoms in patients with *schizophrenia* (a severe mental disorder with symptoms such as hallucinations, paranoia, and disorganized thinking)



Marijuana use has also been linked to other mental health problems, such as:

- depression
- anxiety
- suicidal thoughts among teens

Is marijuana addictive?

Contrary to common belief, marijuana can be addictive. Research suggests that about 1 in 11 users becomes addicted to marijuana (Anthony, 1994; Lopez-Quintero 2011). This number increases among those who start as teens (to

about 17 percent, or 1 in 6) and among people who use marijuana daily (to 25-50 percent) (Hall, 2009a; Hall, 2009b).

How Does Marijuana Affect a User's Life?

Compared to nonusers, heavy marijuana users more often report the following:

- lower life satisfaction
- poorer mental health
- poorer physical health
- more relationship problems

Users also report less academic and career success. For example, marijuana use is linked to a higher likelihood of dropping out of school (McCaffrey, 2010). It is also linked to more job absences, accidents, and injuries (Zwerling, 1990).

How can people get treatment for marijuana addiction?

Long-term marijuana users trying to quit report withdrawal symptoms that make quitting difficult. These include:

- grouchiness
- sleeplessness
- decreased appetite
- anxiety
- cravings

Behavioral support has been effective in treating marijuana addiction. Examples include therapy and motivational incentives (providing rewards to patients who remain substance free). No medications are currently available to treat marijuana addiction. However, continuing research may lead to new medications that help ease withdrawal symptoms, block the effects of marijuana, and prevent relapse.

Points to Remember

- Marijuana refers to the dried leaves, flowers, stems, and seeds from the hemp plant, *Cannabis sativa*.
- The plant contains the mind-altering chemical *delta-9-tetrahydrocannabinol* (THC) and other related compounds.
- People use marijuana by smoking, eating, drinking, and inhaling it.
- Smoking THC-rich extracts from the marijuana plant (a practice called *dabbing*) is on the rise.
- THC overactivates certain brain cell receptors, resulting in effects such as:
 - altered senses
 - changes in mood
 - impaired body movement
 - difficulty with thinking and problem-solving
 - impaired memory and learning
- Marijuana use may have a wide range of effects, both physical and mental, which include:
 - breathing illnesses
 - possible harm to a fetus's brain in pregnant users
 - hallucinations and paranoia
- The amount of THC in marijuana has been increasing steadily, creating more harmful effects for users.
- Marijuana can be addictive.
- Treatment for marijuana addiction includes forms of behavioral therapy. No medications currently exist for treatment.

Learn More

For more information on marijuana and marijuana use, visit:

www.drugabuse.gov/publications/research-reports/marijuana-abuse

www.drugabuse.gov/publications/drugfacts/drugged-driving

For more information on marijuana as medicine and on state laws related to marijuana, visit:

www.drugabuse.gov/publications/drugfacts/marijuana-medicine

www.whitehouse.gov/ondcp/state-laws-related-to-marijuana

Monitoring the Future

Learn more about the Monitoring the Future survey, which annually measures drug, alcohol, and tobacco use and related attitudes among teenage students nationwide:

www.drugabuse.gov/related-topics/trends-statistics/monitoring-future

References

- Anthony J, Warner LA, Kessler RC. Comparative epidemiology of dependence on tobacco, alcohol, controlled substances, and inhalants: basic findings from the National Comorbidity Survey. *Exp Clin Psychopharmacol*. 1994;2:244-268.
- Hall W, Degenhardt L. Adverse health effects of non-medical cannabis use. *Lancet*. 2009;374:1383-1391.
- Hall W. The adverse health effects of cannabis use: what are they, and what are their implications for policy? *Int J of Drug Policy*. 2009;20:458-466.
- Johnston LD, O'Malley PM, Miech RA, Bachman JG, Schulenberg JE. Monitoring the Future national results on drug use: 1975-2014: Overview, Key Findings on Adolescent Drug Use. Ann Arbor, MI: Institute for Social Research, The University of Michigan; 2014.
- Lopez-Quintero C, Pérez de los Cobos J, Hasin DS, et al. Probability and predictors of transition from first use to dependence on nicotine, alcohol, cannabis, and cocaine: results of the National Epidemiologic Survey on Alcohol and Related Conditions (NESARC). *Drug Alcohol Depend*. 2011;115(1-2):120-130.
- McCaffrey DF, Pacula RL, Han B, Ellickson P. Marijuana use and high school dropout: the influence of unobservables. *Health Econ*. 2010;19(11):1281-1299.
- Meier MH, Caspi A, Ambler A, et al. Persistent cannabis users show neuropsychological decline from childhood to midlife. *Proc Natl Acad Sci USA*. 2012;109:E2657-2664.
- Substance Abuse and Mental Health Services Administration (SAMHSA). *Results from the 2013 National Survey on Drug Use and Health: Summary of National Findings*. Rockville, MD: Substance Abuse and Mental Health Services Administration; 2014. HHS Publication No. (SMA) 14-4887. NSDUH Series H-49.
- Zwerling C, Ryan J, Orav E. The efficacy of preemployment drug screening for marijuana and cocaine in predicting employment outcome. *JAMA*. 1990;264(20):2639-2643.