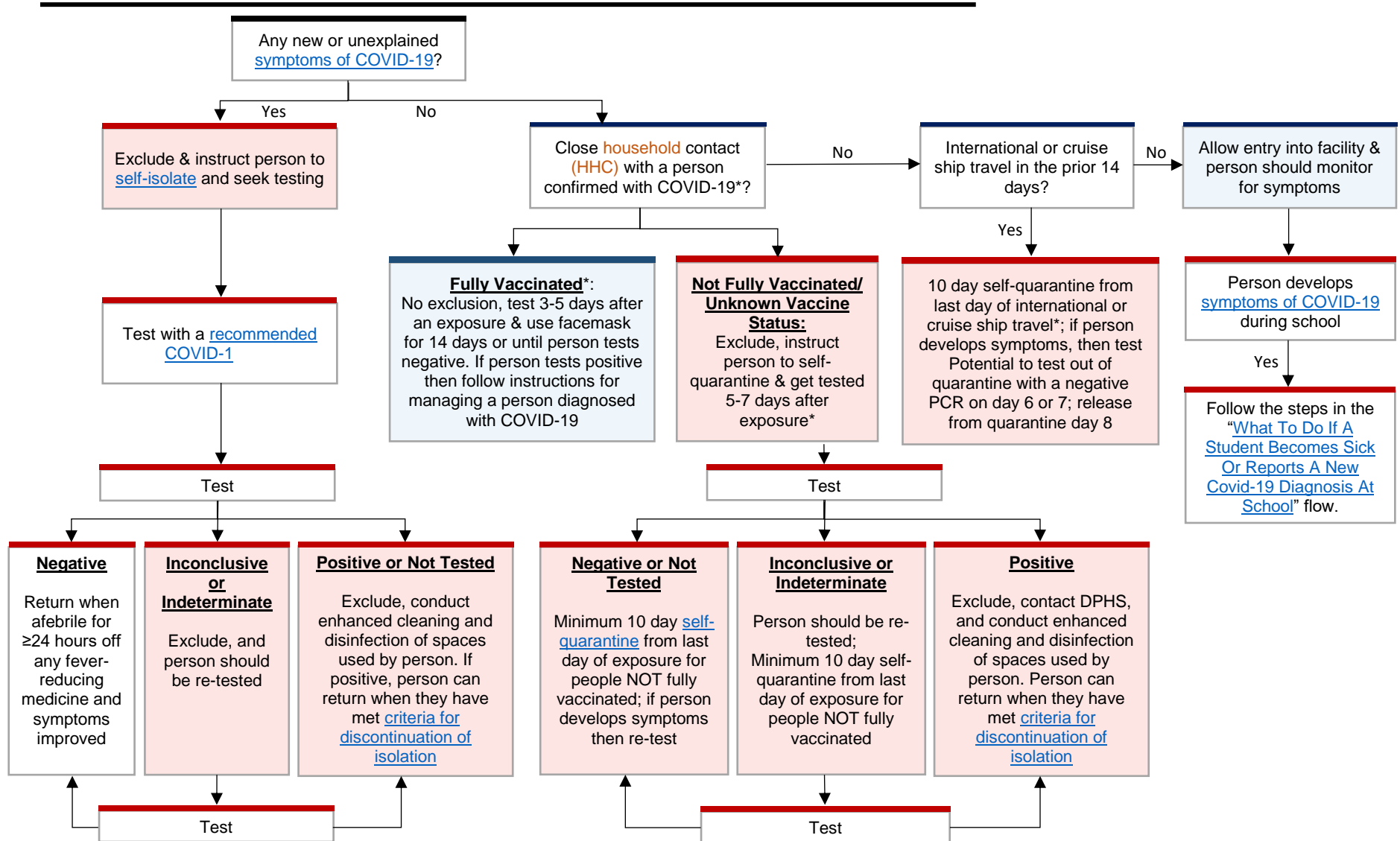


# STUDENT & STAFF SCREENING ALGORITHM



\*The following people do not need to quarantine (see Checklist below for greater detail):

1. Persons who are 14 days or more beyond completion of COVID-19 VACCINATION
2. Persons who are within 90 days of a prior SARS-CoV-2 infection that was diagnosed by PCR or antigen testing

Household contact (HHC): any individual who lives and sleeps in the same indoor space as another person diagnosed with COVID-19 (either temporary or permanent living arrangement), leading to close contact and potential repeated exposure to the person with COVID-19. This includes situations where there may be temporary but prolonged exposure such as sleepover events, shared camp, cabins, vacation rentals, dorm living scenarios, etc.)